

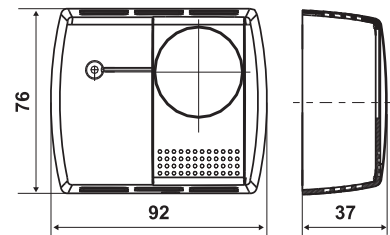
C16

Electromechanical room thermostats with vapor expansion

Room thermostats for ambient temperature control in heating systems, in civil and industrial cooling applications.



Dimensions (mm)



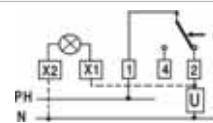
	Temperature regulation range	Differential*	Body admissible temperature	Contacts rating	Protection degree
C16 <input type="checkbox"/>	10 ÷ 30 °C	0,8 K	-10 ÷ 50 °C	10(2,5)A 250Vac	IP20

CONTROL AND SIGNALLING VARIANTS

CONNECTION EXAMPLES (hatched connections by the customer)

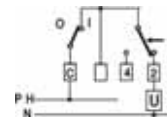
L

WITH SIGNALLING LIGHT



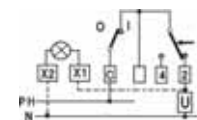
I

WITH ON-OFF SWITCH



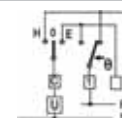
IL

WITH ON-OFF SWITCH AND SIGNALLING LIGHT



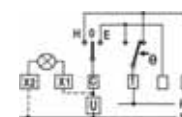
EH

WITH SUMMER-WINTER SWITCH



EHL

WITH SUMMER-WINTER SWITCH AND SIGNALLING LIGHT

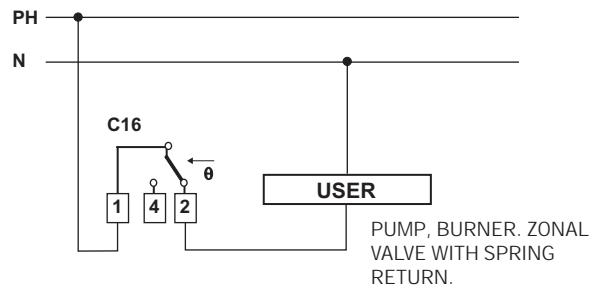


*The differential value must be deducted from the range value. Differential values are referred to a thermal gradient of 4K/h.

ELECTRICAL FEATURES

Snap action SPDT microswitch with AgNi contacts.
Contact rating: 10(2,5)A 250 Vac.

EXAMPLE OF ELECTRICAL WIRING



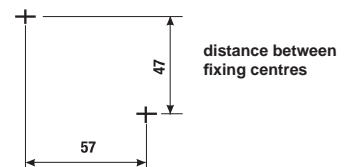
HOMOLOGATION AND STANDARDS

Complies with EN 60730-2-9 standards



INSTALLATION

Wall mounting.



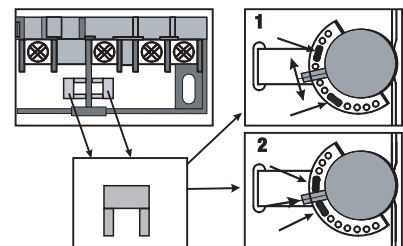
OPERATION

When the temperature rises: 1-2 opens, 1-4 closes.

Vapor pressure operation.

The thermostat has 2 thermoplastic clamps, which allow blocking or limiting the scale range, for preventing damages, etc.

SCALE RANGE BLOCKING OR LIMITATION



FEATURES

Sensitive element with electrically welded stainless steel capsule containing saturated vapor.

Base, cover and knob in thermoplastic material.

Connection with the user with only 2 wires.

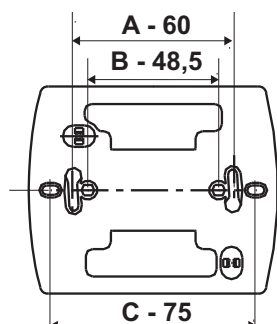
Action type 1B.

Protection class I.

Testing class II.

Unit weight 0,14 Kg.

ACCESSORIES



TC16

Frame for mounting on:

- A - 60 mm round box, fixing by means of screws.
- B - round box with staples (not supplied).
- C - round box, distance between axes 75 mm.